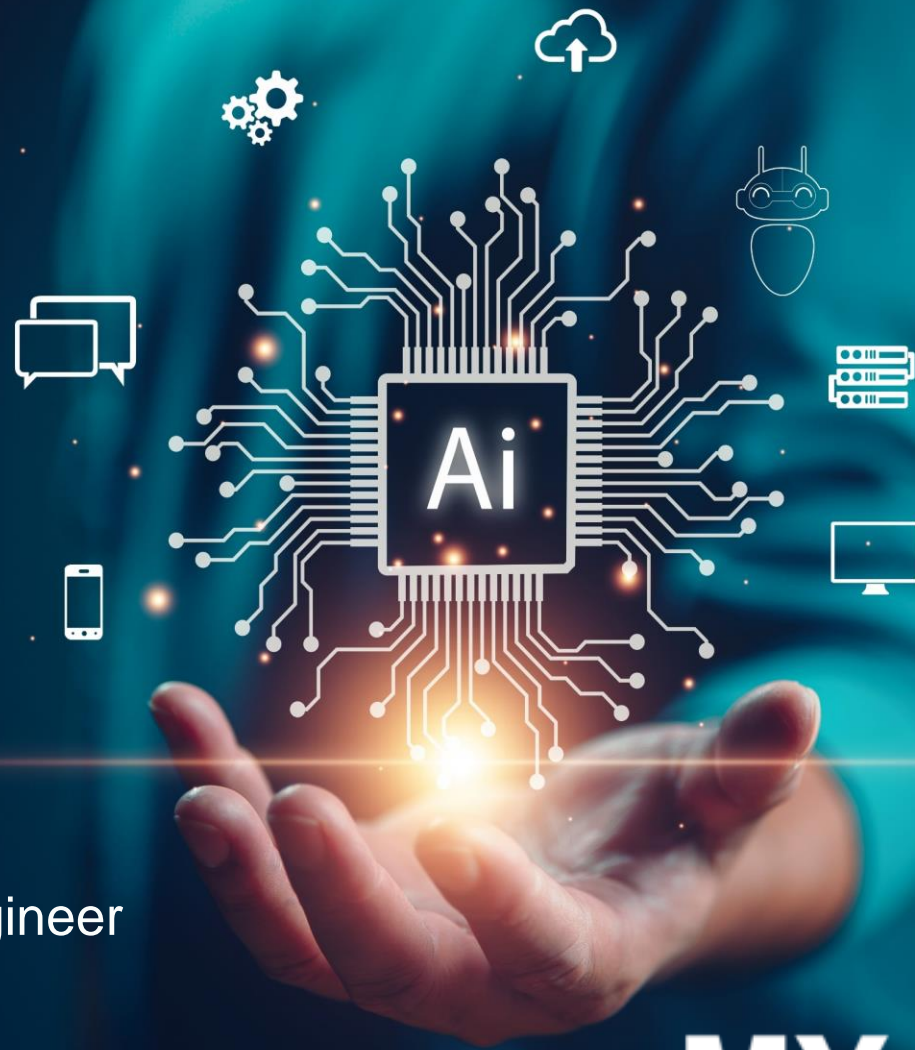


The Voice of AI: Harnessing Voice Meta Data for Gen AI Solutions

Rick Radia – Head of Product
Tom Barker – Senior Machine Learning Engineer



MY VOICE
BIOMETRIC AUTHENTICATION

MyVoice AI: Redefining Security and Personalization through Speaker Verification at the Edge



Provide the best in class tinyML solutions to all Edge AI devices

Verify speakers in real-time even on ultralow power devices



Speaker Verification on voice trigger

Your device should only act on your voice



World-leading Patent-pending technology

First mover advantage with the world's smallest speaker verification engine

Authenticates people at the edge through the unique DNA of their voice



TinyML: Inference at the Edge

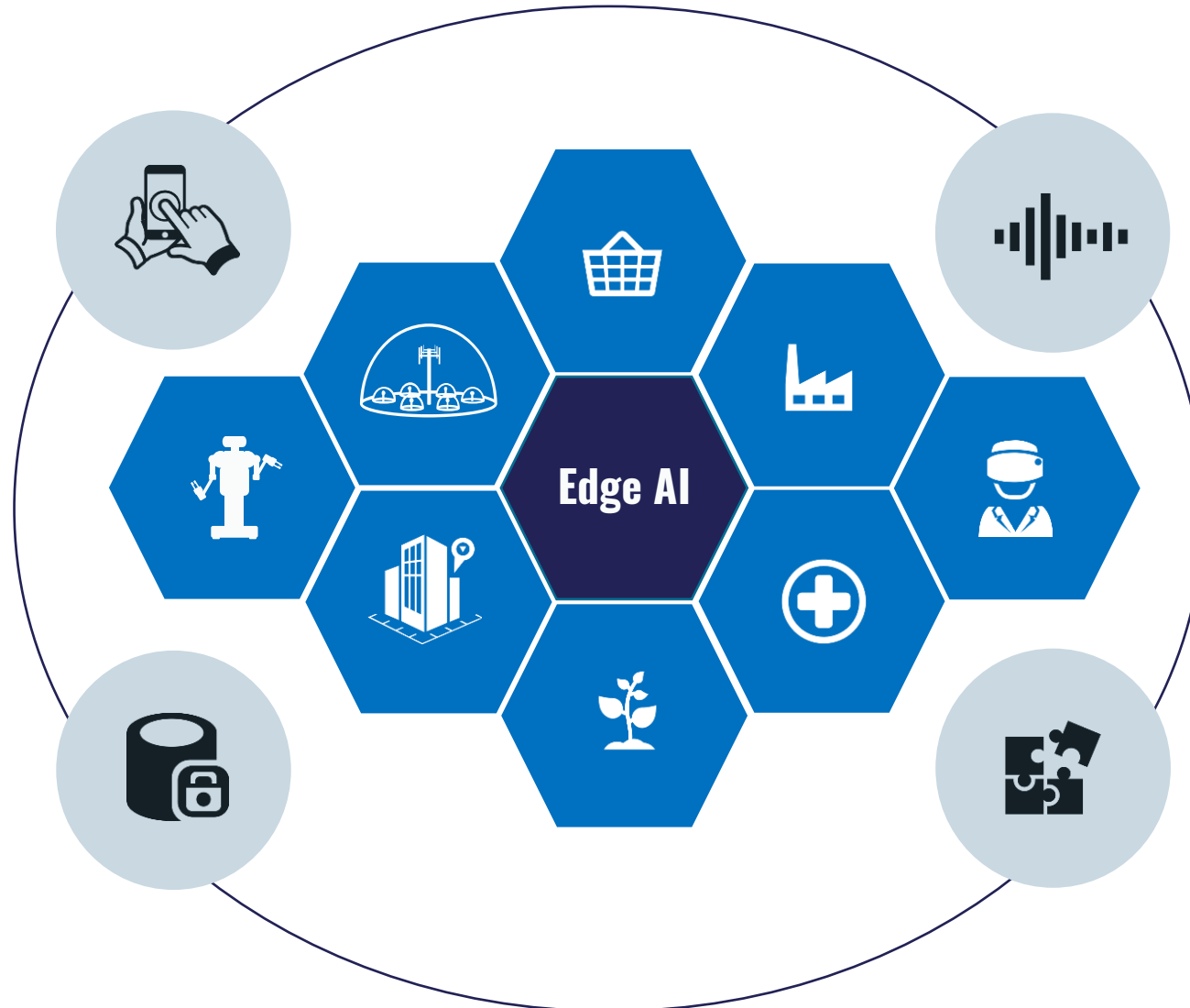
Better User Experience

- Low latency.
- Fluid and accurate response improves useability and forms user stickiness.

Data Privacy

- Reduce the transfer of data to the cloud.
- Laws and regulatory requirements, such as GDPR.

Source: ABI Research



Eliminate Connectivity Challenges

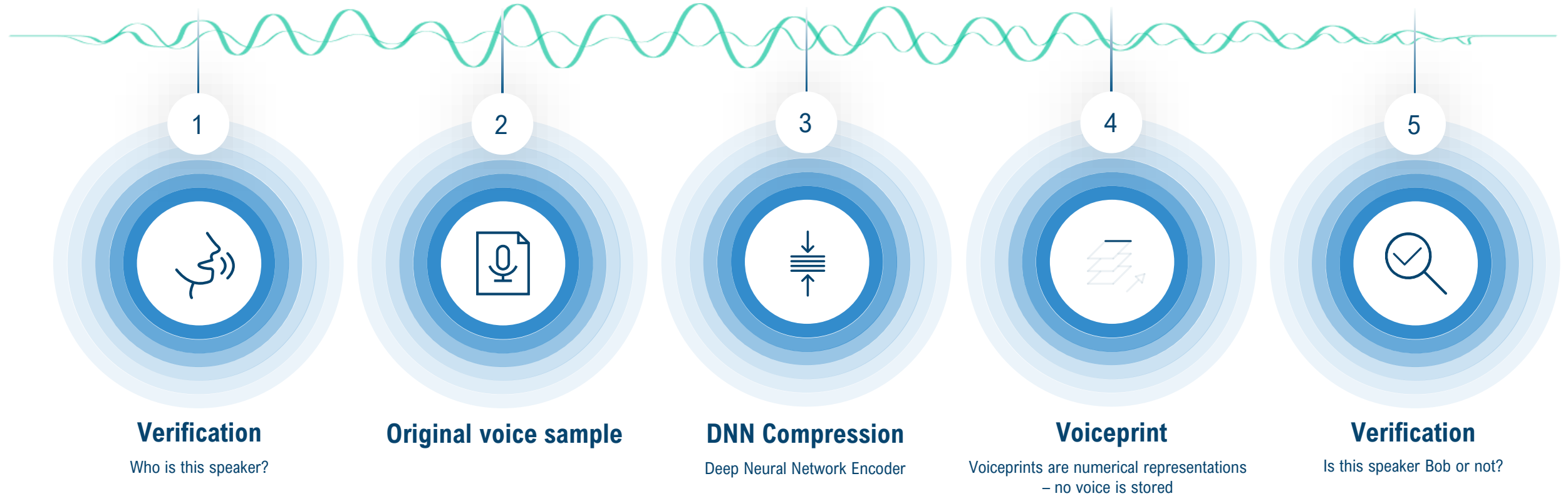
- Less throughput and bandwidth required to transfer data.
- Ideal for IoT devices with poor Wi-Fi or cellular connectivity.

Data-Based Decision Making

- Enterprises are able to make better decision based on data collected.
- More insights into daily operation, usage trends, customer behaviors, etc.



NanoVoice | A Pure Neural Network Approach to Voice Analysis



Quick results

Less than 1.5 seconds



Low computation and memory requirements

Few hundred kB footprint



Superior Accuracy

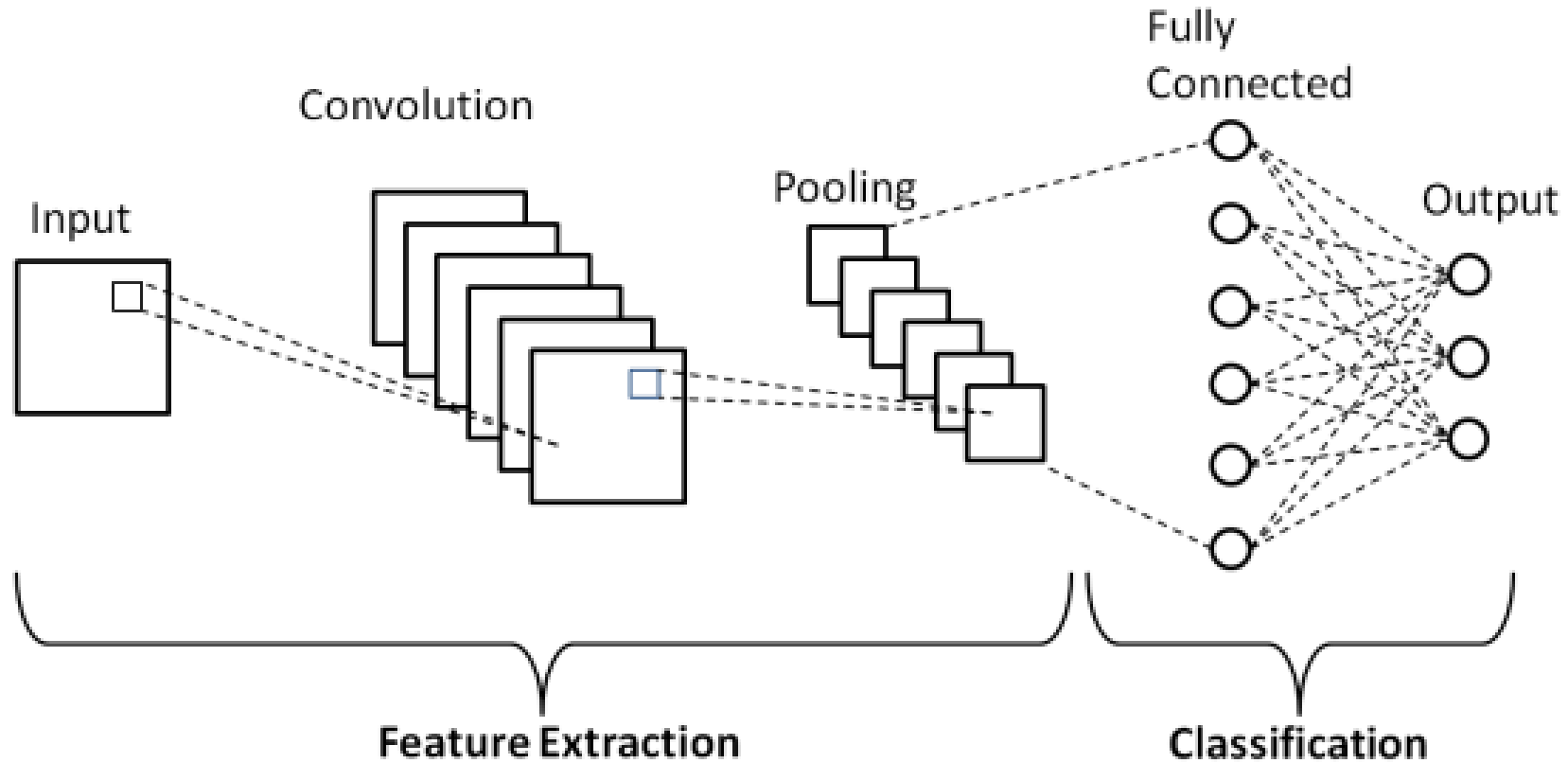
Up to 99%



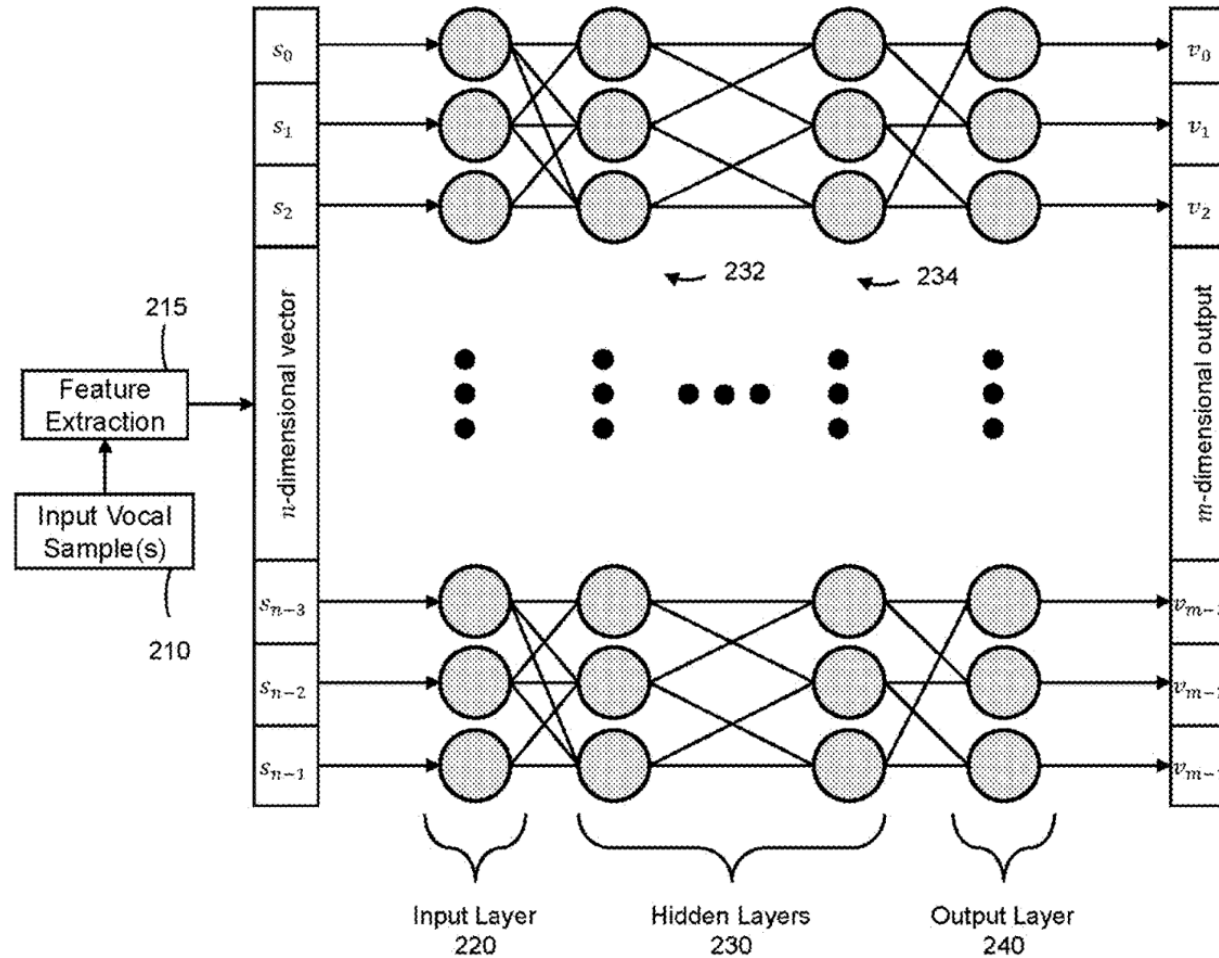
Patent Pending



Voice Meta Data: Feature Extraction



Voice Meta Data: Smart Data Selection



Harnessing Voice Meta Data for Gen AI Solutions

The graphic consists of three overlapping circles, each with a central blue circle containing white text. The circles are surrounded by several concentric, lighter blue rings that fade out towards the edges of the slide.

**NATURAL
LANGUAGE
UNDERSTANDING**

**PERSONALISED
INTERACTIONS**

**ADAPATIVE
LEARNING
ENVIRONMENTS**



Thank You

