

tinyML[®] Talks

Enabling Ultra-low Power Machine Learning at the Edge

“tinyML In-person Austin Meetup”

Ashvin Roharia – Senior Embedded ML Solutions Engineer, Edge Impulse

February 1, 2024



www.tinyML.org



Thank you, **tinyML Strategic Partners**,
for committing to take tinyML to the next Level, together



Executive Strategic Partners

Qualcomm
AI research

Advancing AI research to make efficient AI ubiquitous

Power efficiency

Model design, compression, quantization, algorithms, efficient hardware, software tool

Personalization

Continuous learning, contextual, always-on, privacy-preserved, distributed learning

Efficient learning

Robust learning through minimal data, unsupervised learning, on-device learning

A platform to scale AI across the industry



Perception

Object detection, speech recognition, contextual fusion



Reasoning

Scene understanding, language understanding, behavior prediction



Action

Reinforcement learning for decision making



Edge cloud



Cloud



IoT/IIoT



Automotive



Mobile



Accelerate Your Edge Compute

SYNTIANT

Making Edge AI A Reality

www.syntiant.com

Platinum Strategic Partners

T I N Y



TALKS
webcast

embed UR



**DEPLOY VISION AI
AT THE EDGE AT SCALE**

SONY

Gold Strategic Partners

Build the
Future of tinyML

on **arm**



T I N Y



TALKS
webcast



EDGE IMPULSE

The Leading Development Platform for Edge ML

edgeimpulse.com

Decarbonization

Digitalization



Driving decarbonization and digitalization. Together.

Infineon serving all target markets as
Leader in Power Systems and IoT

www.infineon.com

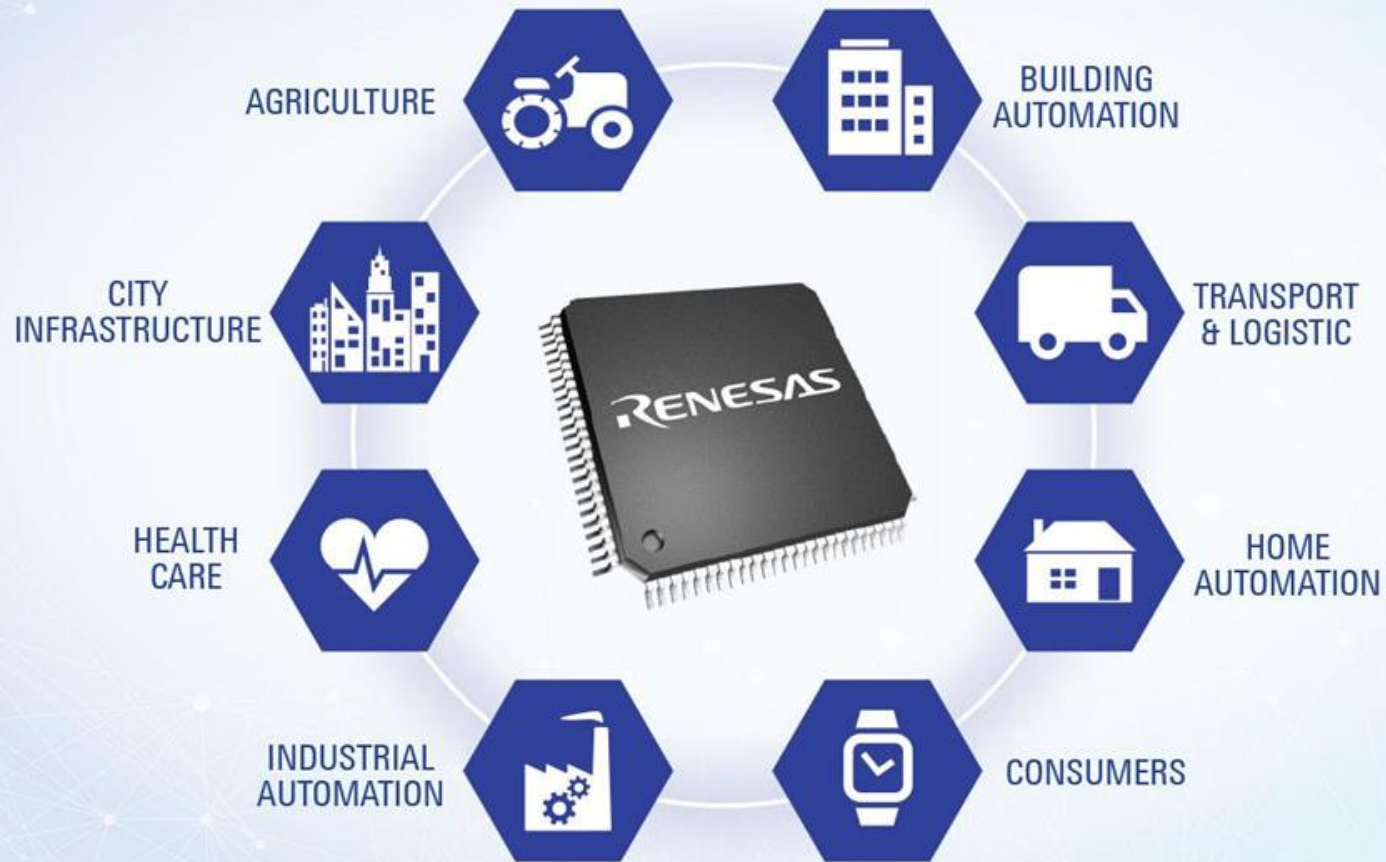




NEUROMORPHIC INTELLIGENCE FOR THE SENSOR-EDGE



Renesas is enabling the next generation of AI-powered solutions that will revolutionize every industry sector.



[renesas.com](https://www.renesas.com)



life.augmented

STMicroelectronics provides extensive solutions to make tiny Machine Learning easy



ENGINEERING EXCEPTIONAL EXPERIENCES

We engineer exceptional experiences for consumers in the home, at work, in the car, or on the go.

www.synaptics.com



T I N Y



Silver Strategic Partners



brainchip



GREENWAVES
TECHNOLOGIES



£Grovety Inc.



Nota AI



QORVO





Join Growing tinyML Communities:



18.9k members in
49 Groups in 41 Countries

tinyML - Enabling ultra-low Power ML at the Edge

<https://www.meetup.com/tinyML-Enabling-ultra-low-Power-ML-at-the-Edge/>



4.2k members
&
14.5k followers

The tinyML Community

<https://www.linkedin.com/groups/13694488/>





Subscribe to
tinyML YouTube Channel
 for updates and notifications
(including this video)

www.youtube.com/tinyML



tinyML
4.33K subscribers

11.4k subscribers, 659 videos with 420k views

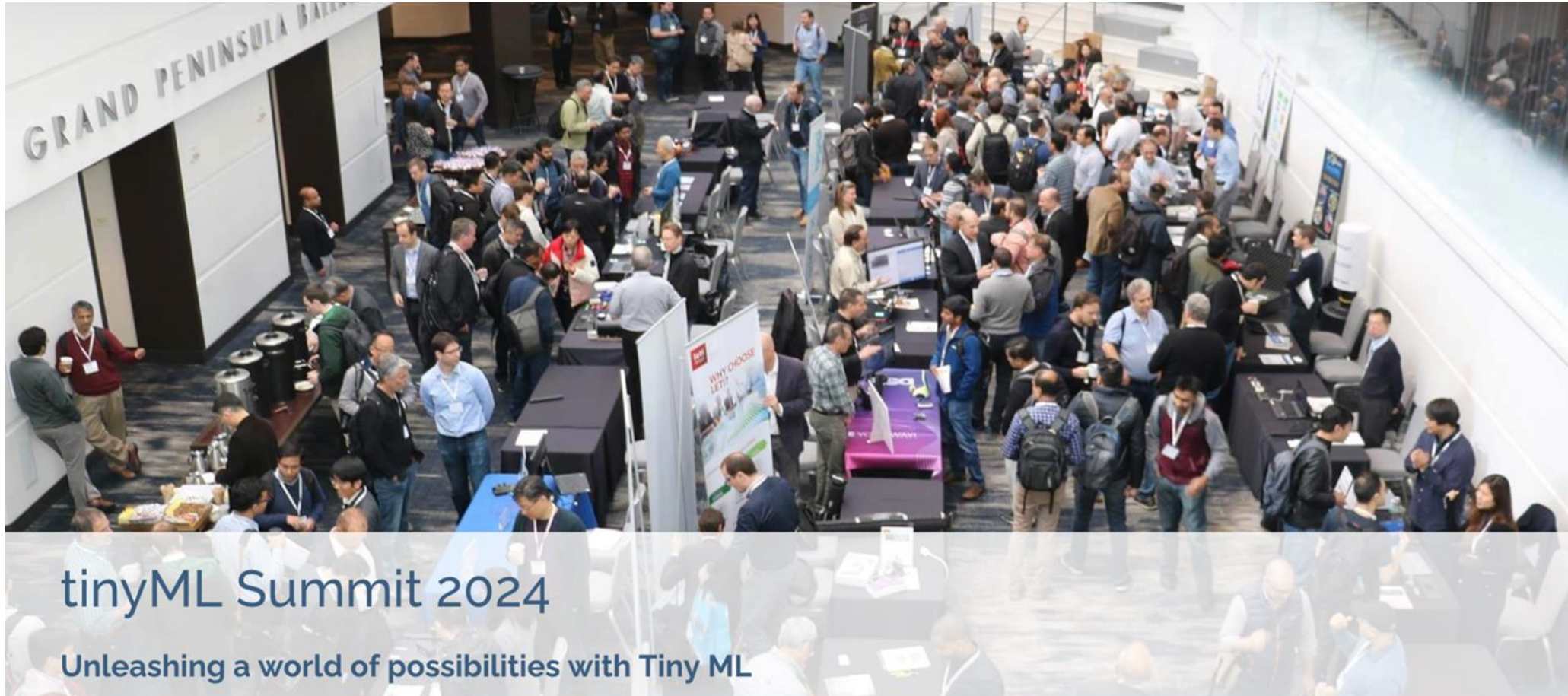
HOME VIDEOS PLAYLISTS COMMUNITY CHANNELS ABOUT

106 views · 4 days ago	138 views · 4 days ago	54 views · 4 days ago	47 views · 4 days ago	132 views · 4 days ago	137 views · 4 days ago
122 views · 4 days ago	262 views · 2 weeks ago	511 views · 3 weeks ago	229 views · 3 weeks ago	265 views · 3 weeks ago	286 views · 1 month ago
351 views · 1 month ago	462 views · 2 months ago	374 views · 2 months ago	133 views · 2 months ago	287 views · 2 months ago	336 views · 2 months ago
378 views · 2 months ago	214 views · 2 months ago	448 views · 2 months ago	159 views · 2 months ago	190 views · 2 months ago	545 views · 2 months ago



tinyML Summit

April 22 - 24, 2024 - Register now!





tinyML Awards 2024



tinyML Awards 2024

- Best Product (*Tiny ML chip, Audio or Vision Application, Sensor Application Product*)
- Best Prototype
- Sustainable Future Pioneer Award



2023 Edge AI Technology Report

The guide to understanding the state of the art in hardware & software in Edge AI.



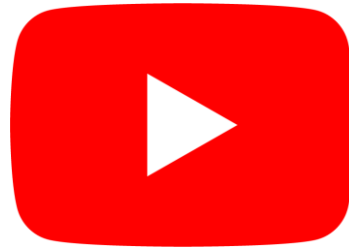


Reminders

Slides & Videos will be posted tomorrow



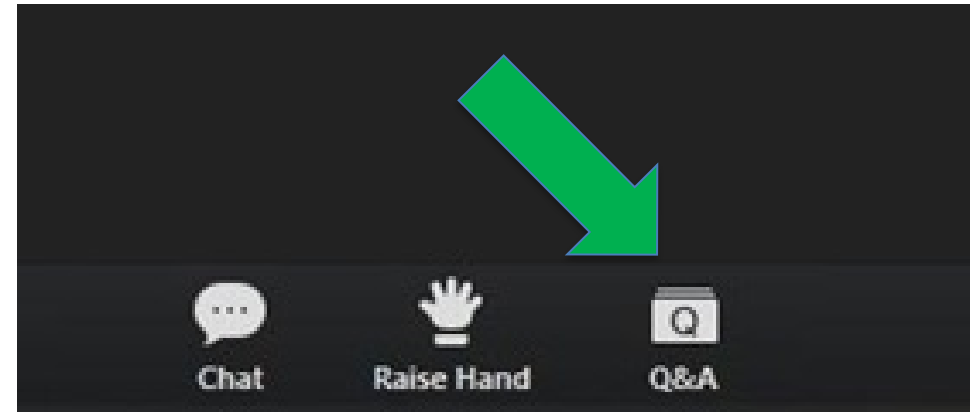
tinyml.org/forums



youtube.com/tinyml



Please use the Q&A window for your questions





Ashvin Roharia



Ashvin has worked in the semiconductor industry for over 10 years working for companies like Intel, AMD, and Silicon Labs. He spent his time there working on firmware for IoT products. In 2022, Ashvin joined Edge Impulse as a solutions engineer to help customers with industrial and digital health use cases. Using computer vision, audio, and sensor data, he has created various ML solutions running on embedded devices. Ashvin holds a BS in Computer & Electrical Engineering from the University of Texas at Austin and an MS in Computer Science from Georgia Tech.

Real World ML Solutions with Edge Impulse



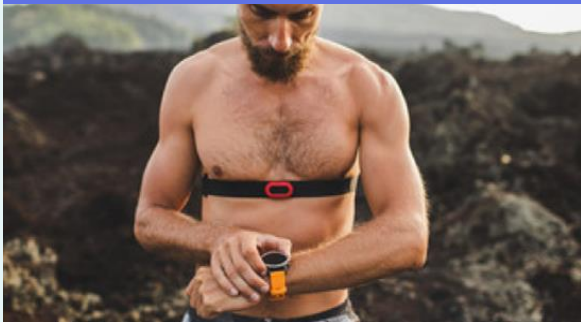
Ashvin Roharia

Senior Solutions Engineer, Edge Impulse

Digital Health



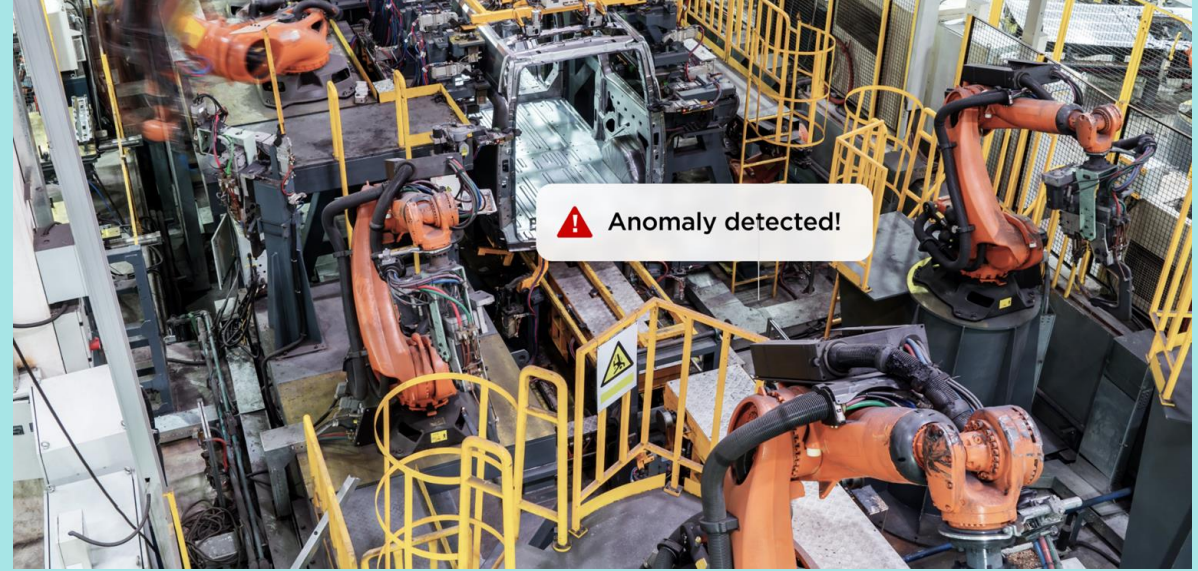
Activity



Clinical



Industrial Productivity



Monitoring



Vision





Cough monitoring on any platform

ARTIFICIAL INTELLIGENCE

How Hyfe Is Transforming Coughs into Actionable Data with Edge Impulse

By Ashvin Roharia

October 19, 2023



[Blog Post Link](#)



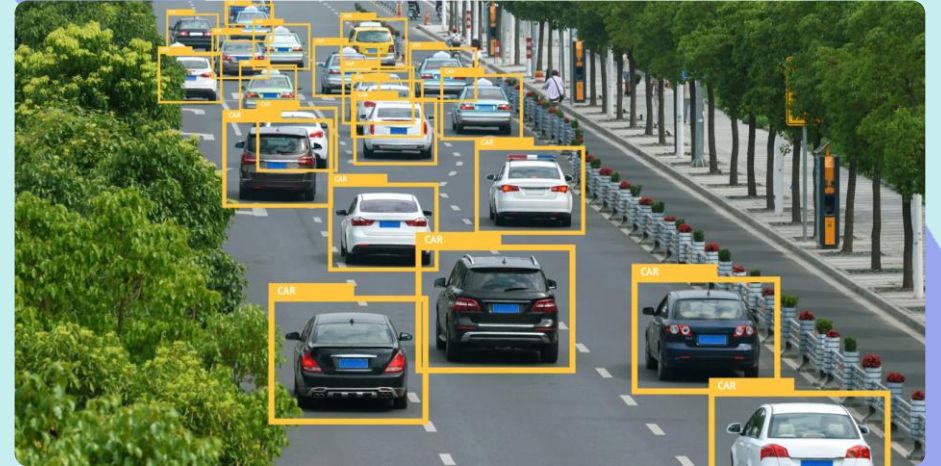


Smart headsets with Poly/HP



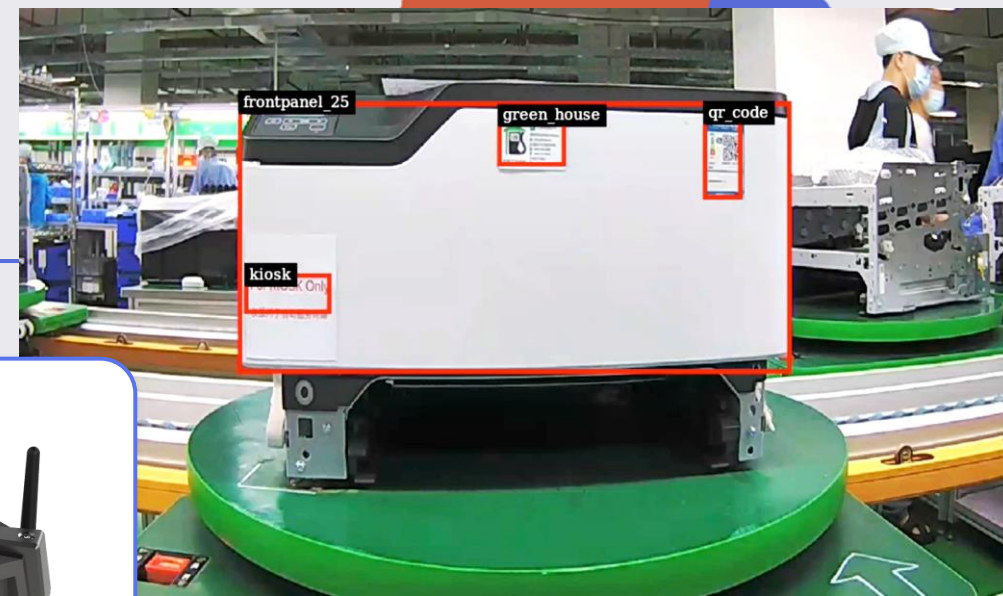
Efficient Logistics with AI

- Asset Identification & Tracking
- Fleet Vehicle & License Tracking
- Pallet Identity & Damage
- Safety Monitoring



Lexmark Optra Edge

Out of the box intelligent edge AI for real industries

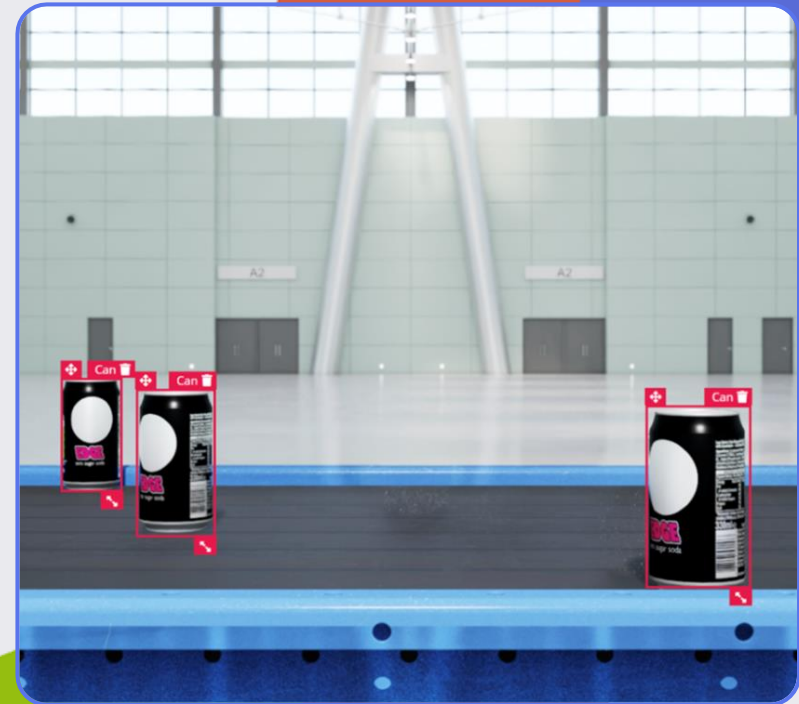


NVIDIA Omniverse on Edge Impulse

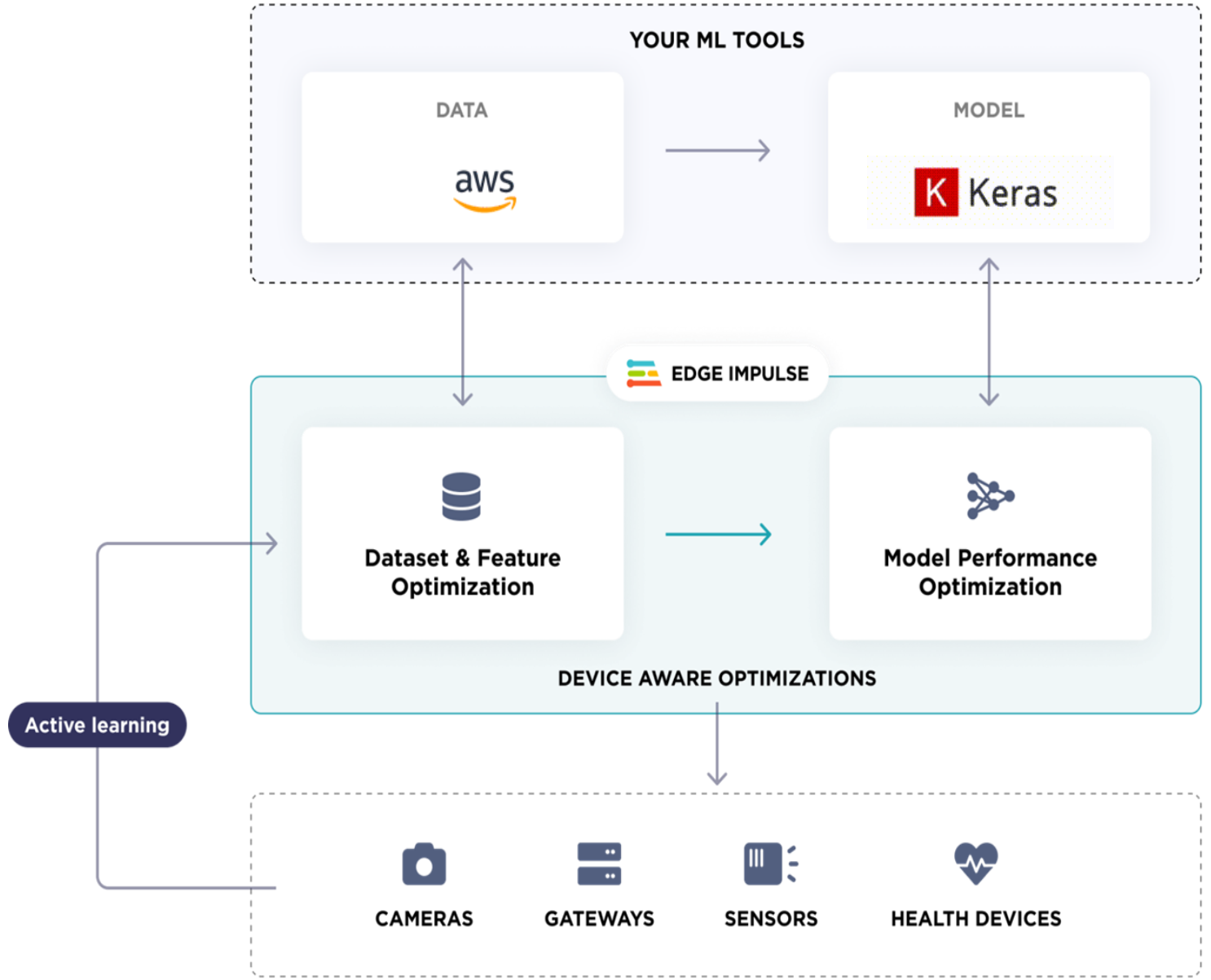
Synthetic data generation and simulation for demanding industrial computer vision applications



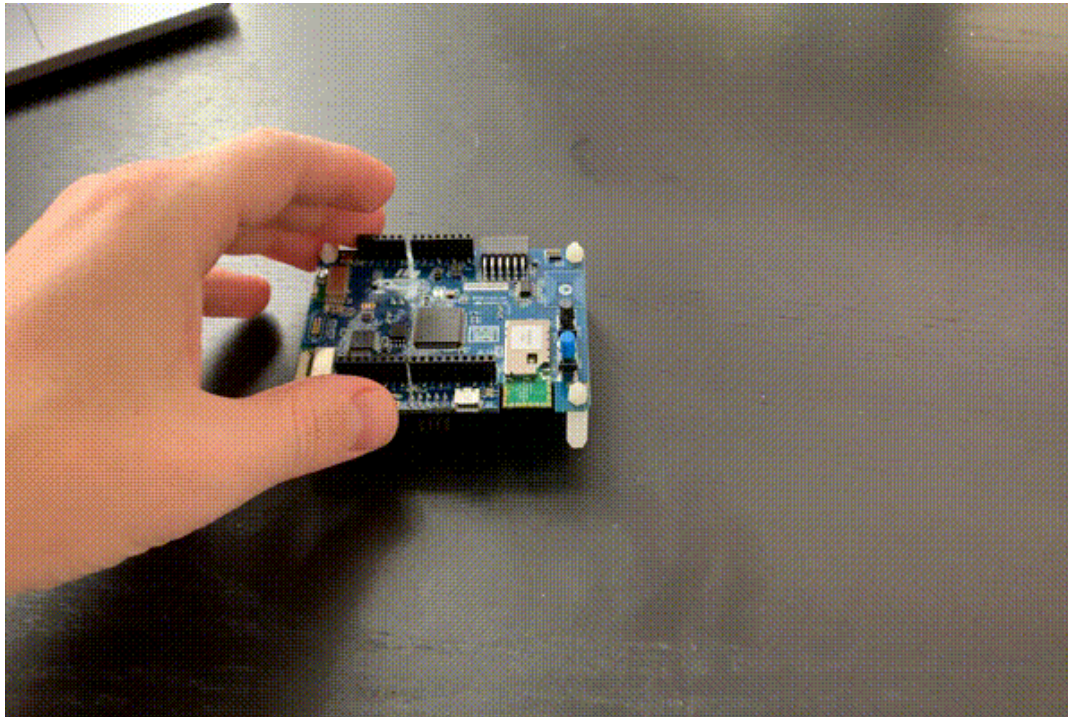
**NVIDIA
OMNIVERSE™**



Make your own model



Edge Impulse Motion Tutorial



<https://studio.edgeimpulse.com/public/14299/latest>



Inference on Device

Edge Impulse Motion Tutorial



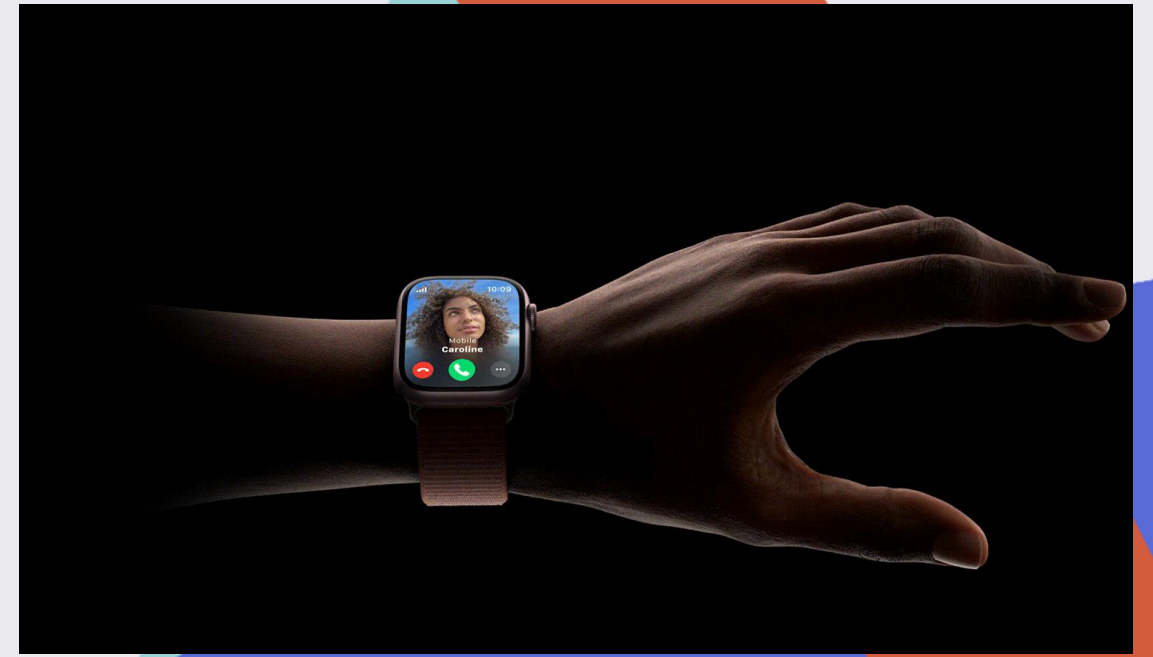
Data Collection on Device

Apple Watch Double Tap



<https://studio.edgeimpulse.com/public/303267/lates>

t



Development > Software Engineering > Embedded Systems



Preview this course

Intro to Embedded Machine Learning

Embedded Systems, Machine Learning, and Tiny ML

4.0 ★★★★★ (177 ratings) 1,654 students

Created by [Ashvin Roharia](#)

🕒 Last updated 10/2021

🌐 English

🗣️ English [Auto]

<https://roharia.com/>





Copyright Notice

This multimedia file is copyright © 2024 by tinyML Foundation. All rights reserved. It may not be duplicated or distributed in any form without prior written approval.

tinyML[®] is a registered trademark of the tinyML Foundation.

www.tinyml.org



Copyright Notice

This presentation in this publication was presented as a tinyML® Talks webcast. The content reflects the opinion of the author(s) and their respective companies. The inclusion of presentations in this publication does not constitute an endorsement by tinyML Foundation or the sponsors.

There is no copyright protection claimed by this publication. However, each presentation is the work of the authors and their respective companies and may contain copyrighted material. As such, it is strongly encouraged that any use reflect proper acknowledgement to the appropriate source. Any questions regarding the use of any materials presented should be directed to the author(s) or their companies.

tinyML is a registered trademark of the tinyML Foundation.

www.tinyml.org